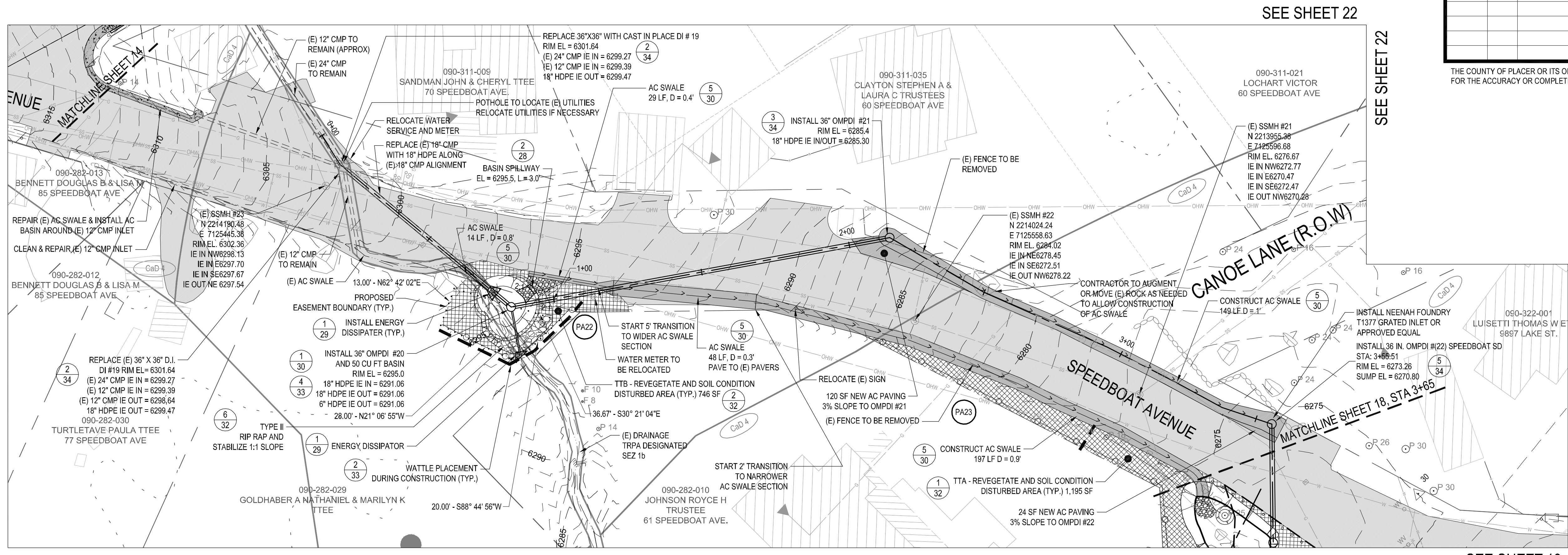


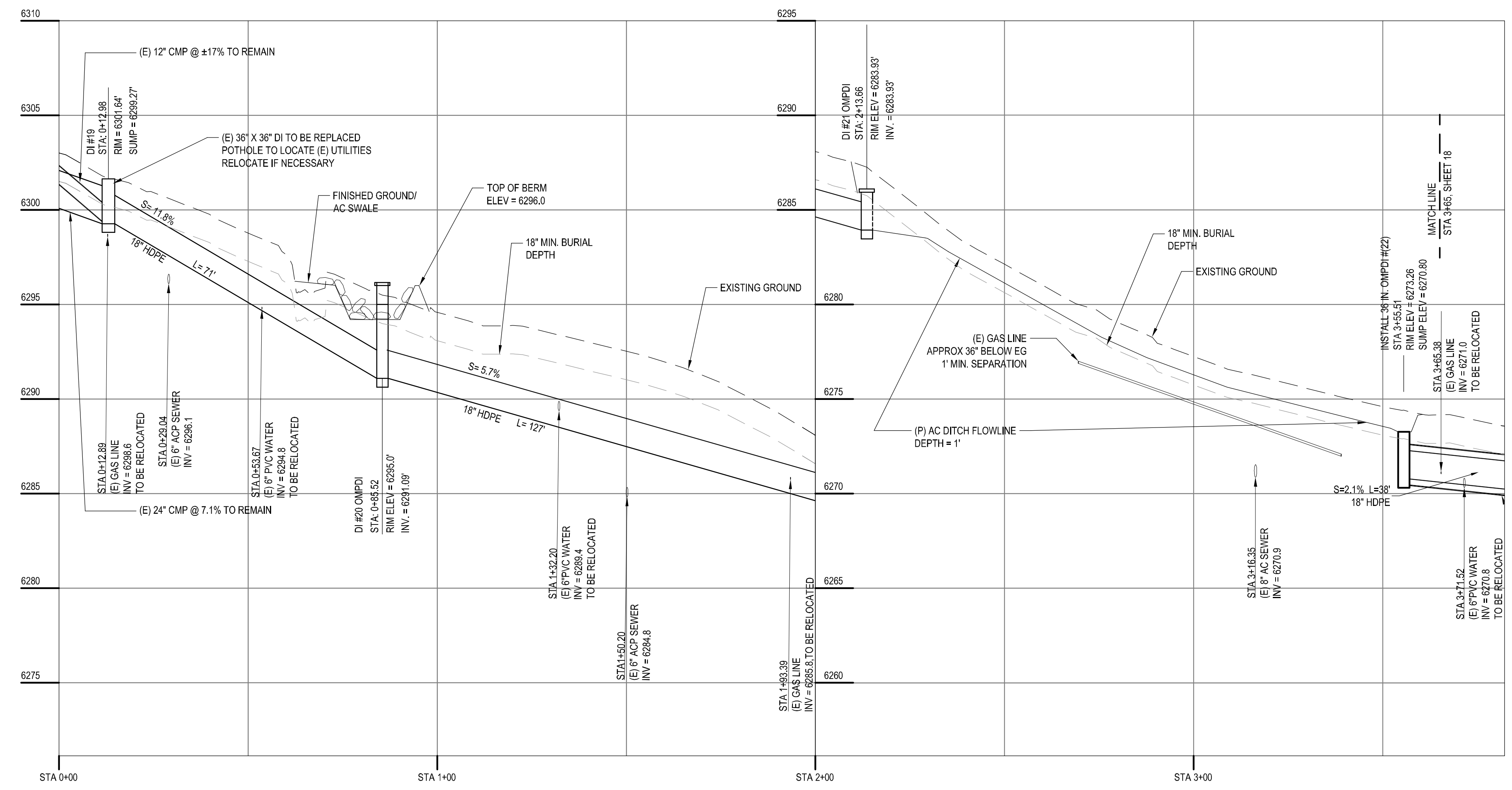
REVISION	DATE	DESCRIPTION AND SHEET NO.	APPROVED BY:	DATE:	ENGINEER	DATE

THE COUNTY OF PLACER OR ITS OFFICERS OR AGENTS SHALL NOT BE RESPONSIBLE FOR THE ACCURACY OR COMPLETENESS OF ELECTRONIC COPIES OF THIS PLAN SHEET.

TREES
REMOVED ON SHEET: 0
REMOVED TOTAL: 9

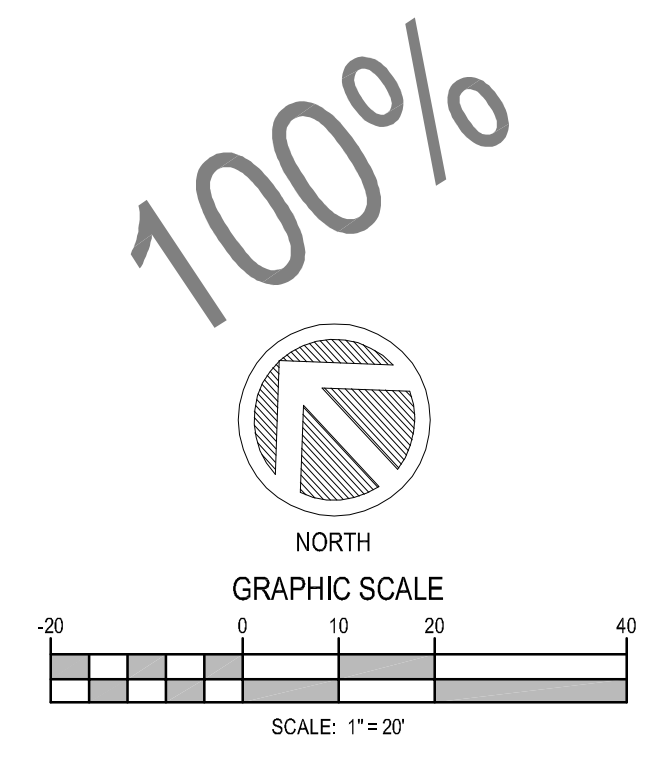


OUTFALL 2 - SPEEDBOAT AVENUE
SCALE: 1"=20'



STORM DRAIN PROFILE
STA. 0+00.00 - 3+65.00
SCALE: HORIZONTAL: 1"=20' VERTICAL: 1"=4'

-- WARNING --
THE LOCATION AND/OR ELEVATION OF EXISTING UNDERGROUND UTILITIES SHOWN ON THESE PLANS ARE ONLY APPROXIMATE. CONTRACTOR TO VERIFY LOCATION AND ELEVATION OF ALL EXISTING UNDERGROUND UTILITIES.



DEPARTMENT OF PUBLIC WORKS

BROCKWAY EROSION CONTROL PROJECT

OUTFALL 2 - SPEEDBOAT AVE. AND PROFILE

COUNTY OF PLACER

DESIGNED: P&E DESIGN & ENGINEERING, INC. 04/24/09
DRAWN: JBB
CHECKED: ATR
RECORD DRAWING

CONTRACT NO. N/A

1024

PLAN SCALE: 1"=20'
PROFILE SCALE: 1"=4'
HORIZ: 1"=20'
VERT: 1"=4'

SHEET NO. 17 OF 36