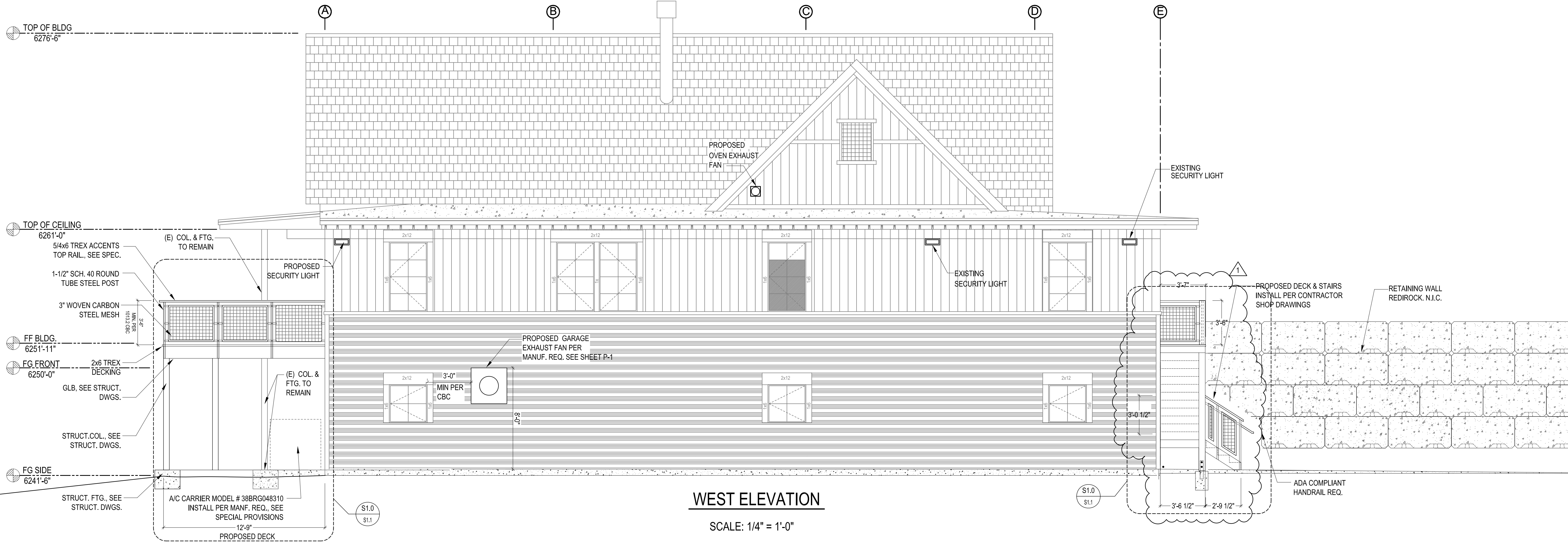


SOUTH ELEVATION
SCALE: 1/4" = 1'-0"



WEST ELEVATION
SCALE: 1/4" = 1'-0"

BAR IS ONE INCH AT FULL SCALE
IF NOT ONE INCH SCALE ACCORDINGLY

REV.	DATE	DESCRIPTION
1	03/24/09	CONTR. TO CONTACT ENGINEER FOR CONCRETE LANDING FINISH GRADE ELEVATION.
2	03/24/09	2x6 DECKING INSTALL PER MANF. REQUIREMENTS

APPROVED: [Signature] AR 03/24/09
DATE: 03/24/09
DRAWN: MK
SCALE: 1/4" = 1'-0"
HORIZONTAL
VERTICAL
FILE: P10333-CORP.YARD

P-R DESIGN & ENGINEERING INC.
8631 North Lake Blvd., P.O. Box 1847
King Beach, California 94043-1847
TEL: 330-346-4500 FAX: 330-452-2074

PROFESSIONAL SEAL
STATE OF CALIFORNIA
C. B. BLOOM
REGISTERED PROFESSIONAL ARCHITECT
No. 10000

NORTHSTAR COMMUNITY SERVICES DISTRICT 49 TRIMONT LANE
ELEVATIONS
APN: 110-081-009 & 007
PLACER COUNTY
TRUCKEE, CA

A3.2
CONFORMED