

Statement of Qualifications

General 2018



Prepared by: PR Design & Engineering Inc.

PO Box 1847

8889 North Lake Boulevard

Kings Beach, CA 96143

tel. 530.546.4500

fax 530.452.2074

“A thing is right when it tends to preserve the beauty, stability and integrity of a community, it is wrong when it tends to do otherwise.”

— Aldo Leopold

Table of Contents

Firm Profile	1
Qualification of Team & Resumes	3
Supplemental Information	9
Letters of Recommendation	10
Recognition and Awards	15
References	16
Budget & Schedule Experience	17
Rates	18
Portfolio of Work	19

Firm Profile

Firm Profile

PR Design and Engineering Inc. (PRDEI) is a California and Nevada Licensed Civil Engineering firm based in Kings Beach, California. PRDEI is a 4 person (three employees, one principal) dynamic and innovative firm employing state of the art strategies and technologies to achieve the goals of today's design projects. Because of our small size, clients receive careful project management directly from our principal Mr. Ryan. We offer a full suite of professional engineering and design services including civil, structural, landscape architecture, public art, water quality improvement, erosion control and revegetation. Our firm specializes in Low Impact Development and has received numerous awards for Integrated Stormwater and Landscape Design.

PRDEI has extensive experience in the Tahoe Basin which includes working relationships with the TRPA, USFS, CTC, LRWQCB, and the agencies noted in the RFQ. We have performed numerous civil engineering projects including roadway design, subdivision layout/design, stormwater/water quality, pervious paving, Caltrans compliance/permitting, sewer/utility infrastructure, commercial property circulation and parking, hydrology, environmental restoration/revegetation, seismic/structural, construction management and all aspects of permitting (TRPA, CEQA, NEPA, NPDES).

Projects in the Tahoe Basin require high levels of coordination. We have facilitated and participated in numerous Technical Advisory Committee (TAC) meetings and understand the Environmental Improvement Project (EIP) process and the Stormwater Quality Investigative Committee (SWQIC) requirements. We have successfully navigated this process with our work on the Brockway Erosion Control Project (BECF) for Placer County. Background knowledge of the permit and entitlement process makes us better Construction Managers for Lake Tahoe Projects. We are able to convey the requirements of the plans and specifications and explain why they are important or needed. Our local knowledge helps us anticipate and resolve issues more efficiently.

In regards to TRPA compliance we are well versed in the TRPA Code of Ordinances (COO) and have established excellent working relationships. PRDEI has similar understanding of Lahontan RWQCB and State WRCB requirements for NPDES and ROWD submittals.

Our projects show a breadth of performance on municipal and commercial projects within the Lake Tahoe and Truckee River Basin(s). We are comfortable as a project lead or in a supporting role. Typically we hire sub consultants for Professional Land Surveying, Geotechnical Engineering, EIR, CEQA, NEPA, Environmental Analysis and Documentation and Materials Testing. We have a unique skill set beyond typical civil engineering firms, which includes meeting facilitation and public outreach. These skills are critical for project delivery and allow us to offer meaningful support to Placer County in their public and stakeholder outreach.

As a dynamic and enterprising firm, PRDEI maintains our competitive edge by utilizing the best available technologies for engineering design, modeling, and verification. We are skilled across a number of software platforms including: AutoCAD 2017 and Civil 3D, Adobe Design Premium CS4, HEC-RAS, HEC-HMS, HEC-1, HEC-2 and Pond Pack.

From our inception in May of 2005, we have developed and defined a niche for environmentally friendly design and engineering. Our suite of services and skills matched with local experiences and understanding are peerless. We feel our competence is best represented by our completed projects, repeat customers, awards, and reputation in the place we call home.

Qualification of
Team &
Resumes

Qualifications of Team

Andrew T. Ryan PE, LEED AP

Mr. Ryan is the prime project manager and construction manager for PRDEI and oversees all aspects of project development. Andrew has spent the last thirteen years working as a civil engineer in the Lake Tahoe Basin and surrounding area and established PR Design & Engineering Inc. in 2005. His responsibilities include engineering and design, value engineering, design review, coordination with Agency Staff, PRDEI staff management, research and development of programming, lecturing and conducting workshops, and construction management. Andrew has been the lead design professional for numerous projects including the Brockway Erosion Control Project (Placer County), Northstar Community Services District (NCSD) Master Plan and New Administration Building, NCSD Corporate Yard Office Building Re-location Project, and the American Rivers LID Demonstration Project. His creative thinking and careful engineering perspective ensure regulatory/code compliance and unique solutions to complex problems.

Jason R. Lynn, PE, QSD/ QSP, LEED AP BC+C

Mr. Lynn joined PRDEI in 2011 and serves as an associate engineer. Jason has over ten years of experience as a civil engineer in the greater Lake Tahoe area and has worked on a variety of public and private sector projects. Jason's responsibilities include design and engineering, design review, drafting and construction management and inspections and has been responsible for preparing and implementing Stormwater Pollution Prevention Plans (SWPPP) under the California Statewide Construction General Permit and the Tahoe Basin Permit. He has extensive experience in preparation of environmentally sensitive plans and supporting documentation for public and private projects throughout northern California and Nevada. Current and past projects include urban stormwater management, sustainable site design, grading and drainage design, potable water distribution and wastewater treatment designs.

Meghan B. Jewett, PLA

Ms. Jewett serves as PRDEI's landscape architect and design associate and is an instrumental member of the staff. Meghan has over twelve years of experience in design, landscape and civil engineering and joined PRDEI in 2006. She provides civil and landscape design and drafting, document and specification preparation, water quality monitoring, marketing and graphic design, materials and equipment preparation, schedule and task tracking, and communication support and is an instrumental member of our staff. She has carefully organized and prepared numerous sets of construction documents (PS&E) for municipal public bid and private commercial projects. She excels in AutoCAD Civil 3D, Adobe Creative Suite, and hand rendering/drawing. Meghan's intimate understanding of our projects allows her to "look ahead" and identify upcoming needs. She is a key asset to our project delivery system.

Andrew T. Ryan, PE

PRINCIPAL

Education

Bachelor of Science,
Mechanical Engineering
Clemson University, Clemson, SC

Certifications

Professional Civil Engineer
CA License #C 68809
NV License #18055

Caltrans Resident Engineer Academy -
Local Assistance February 2014

LEED Accredited Professional
United States Green Building Council

SMA - America Certified Designer
Certified PV String Designer 2010

Distinguishing Qualifications

Four "Best in the Basin: TRPA Awards
for 2006, 2007, 2013, 2016

North Tahoe Design Review Committee
Appointment 2007-2012

NLTRA Infrastructure/Transportation
Committee 2009-2001, 2013-2016

Instructor TPRA/ UNR BMP
Contractor's Workshop 2005-2009

Affiliations

American Society of Civil Engineers

American Solar Energy Society

Sierra Green Building Association
Founder 2002

Sierra Green Building Association
Executive Committee, Public Policy
Chair 2003-2005

Relevant Experience

Resident Engineer, Kings Beach Commercial Core Improvement Project Phase 3, Placer County, Kings Beach, CA. Resident Engineer and inspector for \$900k final phase of Kings Beach Commercial Core. Tasks include daily oversight, submittal review, field changes, quantity verification, change orders and pay estimates.

Assistant RE Inspector, Kings Beach Commercial Core Improvement Project, Placer County, Kings Beach, CA. Assistant to the RE was responsible for construction management and oversight of contractor for joint Caltrans and Placer County "Main Street" Improvement project. Daily tasks include field reports, issue resolution, quantity tracking and quality assurance.

Principal Engineer, Woodvista Redevelopment, Woodvista LLC, Tahoe Vista, CA. Principal Engineer performing all primary project coordination for entitlement, permit, and construction. Specific tasks included Conditional Use Permit, Caltrans Encroachment, Variances, Scenic Compliance and public hearing project representation. Complete civil engineering package included utility undergrounding, site design, stormwater design, ADA compliance and landscape design.

Principal Engineer, Tahoe Beachfront Residences, Peak10 LP, Kings Beach, CA. Principal Engineer performing all primary project coordination for entitlement, permit, and construction. Specific tasks included Conditional Use Permit, Caltrans Encroachment, Variances, Scenic Compliance and public hearing project representation. Complete civil engineering package included utility undergrounding, site design, stormwater design, ADA compliance and landscape design.

Principal Engineer, Robert Sinskey Vineyards Winery Renovation, Robert Sinskey, Napa, CA. Lead engineer for winery expansion project to increase visitor experience and capacity from 25k to 60k cases of wine. Project includes a sub-surface constructed wetland to treat process water, for irrigation re-use, from an organic/bio-dynamic winery in Napa County. Design and engineering included new domestic and process wastewater systems, utility upgrades, fire water storage, grading, overflow parking lot, and landscape improvements. In addition, a Stormwater Quality Management Plan was produced for Napa County and a Report of Water Discharge was developed for the State Water Resources Control Board.

Principal Engineer, Northstar Community Services District (NCSD) Administration Building, NCSD, Northstar, CA. Project prime and lead engineer for the design and engineering through completion of construction documents, CEQA, LRWQCB & Placer permitting, SWPPP creation/inspection, and construction management. The project included ADA access and parking, all utility improvements, temporary and permanent BMPs, and integrated stormwater landscape design and installation.

Principal Engineer, Brockway Erosion Control Project, Placer County, Brockway, CA. Principal engineer responsible for engineering, designing, construction documents, TRPA, Caltrans and Lahontan permitting, SWPPP preparation and construction support. This complex Lake Tahoe water quality, Environmental Improvement Project (EIP) followed the SWQIC method of design and alternative selection. Coordination with multiple entities including: Placer County DPW, Tahoe Regional Planning Agency, Lahontan Water Quality Control Board, CA Tahoe Conservation, US Forest Service, Nevada D.O.T, Caltrans, Washoe County, private businesses, and residents.

Principal Engineer, Tahoe Regional Planning Agency (TRPA) BMP Manual, TRPA, Lake Tahoe, CA. Project prime and oversight on design and content development for the BMP Manual. Close coordination with the Technical Advisory Committee.



Jason R. Lynn, PE

ASSOCIATE ENGINEER

Education

B.S., Environmental Engineering,
University of Connecticut

Certifications

Professional Civil Engineer
CA License #C 76864

Qualified SWPPP Developer
QSD#22310

LEED AP BD+C ID #10242203

Affiliations

American Society of Civil Engineers

California Stormwater Quality
Association

Truckee Tahoe Engineers Association

Awards

2015 KBCCIP - Lahontan and Caltrans
Construction Stormwater Partnership
Award



Relevant Experience

Project Engineer, South Shore Drive Storm Damage Project, Placer County, Truckee, CA. Prepared plans, design reports, engineer's estimate and project specifications for the installation of storm drain improvements and the replacement of asphalt within the Placer County and Town of Truckee rights of way. Worked extensively with Placer County Engineering and Surveying Department to develop design alternatives and bid alternates pending funding allocation from FEMA and Placer County.

Project Engineer, Peabody Creek Restoration Project, American Rivers, Grass Valley, CA. Prepared civil improvement plans for the restoration of a portion of Peabody Creek that will restore habitat and improve water quality within the City of Grass Valley. Worked closely with the City of Grass Valley and the Federal Emergency Management Agency (FEMA) to update flood mapping of the area. Prepared HEC-HMS and HEC RAS analysis to establish design storm flow rates and establish limits of the floodplain.

Project Engineer, Incline Bike Park, Incline Village General Improvement District, Incline Village, NV. Prepared civil improvements plans, engineer's estimates, and project specifications for the Incline Bike Park. Worked closely with IVGID, Washoe County, TRPA, and NDEP to develop plans and permit documents for the two-acre public recreation facility.

Project Engineer, Woodvista Redevelopment, Woodvista LLC., Tahoe Vista, CA. Prepared civil improvement plans and design calculations for the Woodvista Redevelopment Project. Coordinated with Placer County and TRPA to ensure that the project met or exceeded design guidelines in the newly implemented Tahoe Basin Area Plan. Coordinated with Caltrans for proposed improvements within the state right of way.

Project Engineer, Tahoe Beachfront Residences, Peak10 LP, Kings Beach, CA. Developed design and engineering plans for an urban infill, multi-family residential redevelopment project. Assisted with Caltrans, TRPA, Placer County, NTPUD and utility provider permitting and coordination. Prepared grading, drainage and utility plans/ profiles and project drainage report.

Water Pollution Control Manager (QSD/QSP), Kings Beach Commercial Core Improvement Project, Placer County, Kings Beach, CA. Prepared Storm Water Pollution Prevention Plan (SWPPP) to comply with federal NPDES and state Water Board requirements. Performed routine visual inspections, prepared rain event action plans and collected and analyzed water quality samples for pH and turbidity. Provided weekly contractor stormwater training and attended Caltrans/Lahontan Construction Project Stormwater Review meetings. Coordinated Grading Season Exceptions and Variances with the Lahontan Water Board and the TRPA. This project was awarded the Lahontan and Caltrans Construction Stormwater Partnership Award in 2015.

Water Pollution Control Manager: Phase 2 Brickelltown Streetscape Project, Q&D Construction, Truckee, CA. Prepared Storm Water Pollution Prevention Plan (SWPPP) to comply with federal NPDES and state Water Board requirements. Performed routine visual inspections, prepared rain event action plans and collected and analyzed water quality samples for pH and turbidity. Provided weekly contractor training and worked closely with the Town of Truckee to insure compliance with state and federal permits.

Meghan B. Jewett, PLA

LANDSCAPE ARCHITECT

Education

Bachelor of Landscape Architecture
Magna Cum Laude

Independent Study
Wellington, New Zealand

Field Study - Deserts of Africa
South Africa and Namibia

State University of New York -
Environmental Science & Forestry
(SUNY-ESF) Syracuse, NY

Certifications

Professional Landscape Architect
CA License #LA 5687

Affiliations and Awards

North Tahoe Business Association
Design Committee Volunteer 2012-
2016

Sierra Green Building Association
Events Volunteer 2006-2010

Sierra Green Building Association
Events Chair 2008

North Tahoe Resort Association -
Volunteer of the Year Award 2007

Certificate of Honors Award
American Society of Landscape
Architecture 2006

Sigma Lambda Alpha - Honor Society
Nu Chapter Vice President 2003

Relevant Experience

Landscape Architect, Woodvista Redevelopment, Woodvista LLC., Tahoe Vista, CA.
Developed site layout, landscape plans and design details for the proposed Woodvista redevelopment project. The dilapidated motel will be redeveloped into 7 townhomes with additional site amenities including: common area gazebo with kitchen, pool and spa. Assisted with permitting documents for Caltrans, TRPA, Placer County, NTPUD, North Tahoe Fire and other utility providers. Prepared scenic renderings as viewed from HWY 28 per TRPA requirements.

Landscape Architect, Speedboat Beach Access & Restroom Project, Placer County, Brockway, CA. Prepared engineering, structural and landscape plans for the new elevated walkway and stairs for beach access and a new restroom building. Permitting documents included, TRPA Shorezone Scenic documents and photo simulations as viewed from Lake Tahoe.

Landscape Architect, Tahoe Beachfront Residences, Peak10 LP, Kings Beach, CA.
Developed design and engineering plans for an urban infill, multi-family residential redevelopment project. Assisted with Caltrans, TRPA, Placer County, NTPUD and utility provider permitting and coordination. Developed scenic analysis, including photo simulation of the site and structure as viewed from Lake Tahoe and HWY 28.

Landscape Architect, Second Creek SEZ Restoration, Ridgeview Estates Development, Incline Village, NV. Developed engineering and landscape plans for an in-stream restoration and stabilization of an SEZ channel. The project increased riparian habitat and enhanced the performance of the channel and decreased head cutting and fine sediment transport. Provided construction oversight, including planting installation and ongoing monitoring of the hydrology, soils and vegetation required by TRPA.

Landscape Architect, NCSD Administration Building Phase 1 and 2, NCSD, Northstar CA. Prepared design and engineering plans from conceptual design to construction documents for NCSD's Administration & Engineering Building. Provided ongoing RFI and construction submittal responses.

Landscape Architect, Robert Sinskey Vineyards Renovations, Robert Sinskey, Napa, CA. Prepared civil and landscape plans from conceptual design to construction documents for the expansion of Robert Sinskey Vineyard's certified organic and bio-dynamic winery facility. Provided ongoing RFI and construction submittal responses.

Landscape Architect, Placer County Brockway Erosion Control Project, Brockway, CA. Assisted in design solutions for collecting and treating stormwater through Best Management Practices. Preparation of construction documents, specifications for civil and landscape plans. Responsibilities include construction oversight for planting installations, preparation of public meeting and Technical Advisory Committee (TAC) presentations and assisted with Caltrans, TRPA and Placer County permitting.

Landscape Architect, Nevada County Rood Center LID Project, American Rivers, Nevada City, CA. Developed design and engineering plans for the retrofit of a conventional stormwater system (convey and discharge) to a low impact demonstration project (infiltrate and treat). Provide landscape and irrigation plan and detail review and planting installation oversight.

Supplemental
Information



PLACER COUNTY DEPARTMENT OF PUBLIC WORKS

Ken Grehm, Director
Peter Kraatz, Assistant Director
Robert Costa, Deputy Director

December 17, 2014

To Whom It May Concern:

The Placer County Department of Public Works, Tahoe Engineering Division, has worked successfully with PR Design and Engineering, Inc. (PRDEI) on numerous projects in North Lake Tahoe. The firm is known for innovative design and engineering and has specialized Tahoe Basin permitting expertise.

Recently, Placer County worked with PRDEI to design, permit, and perform construction support on the Brockway Erosion Control project, a subdivision scale water quality improvement project. This project was unique in that it required a high level of coordination as it involved agencies from California, Nevada, Lahontan Regional Board, and Tahoe Regional Planning Agency.

From 2013-2014 PRDEI has been part of the Kings Beach Commercial Core Capital Improvement Project team. The firm reviewed project plans for build-ability and bid-ability, created the project Storm Water Pollution Prevention Plan, and performed storm water compliance inspections. Additionally, due to the scale and pace of the job, PRDEI was requested to provide regular construction inspection services for compliance with plans, specifications, and applicable codes.

PRDEI also provides Placer County with technical expertise on innovative materials and consulting on unique challenges with development within the Tahoe Basin.

I recommend other entities consider using PRDEI for assistance to help make their projects a success as well.

Respectfully submitted

A handwritten signature in blue ink, reading "Peter R. Kraatz", is written over a horizontal line.

Peter R. Kraatz, P.E.
Assistant Director
Placer County Department of Public Works



N•C•S•D
Northstar Community Services District
908 Northstar Drive, Northstar, CA 96161
P: 530.562.0747 • F: 530.562.1505 • www.northstarcsd.org

Board of Directors

JEANN GREEN
NANCY IVES, PRESIDENT
FRANK SEELIG
DARRELL SMITH
CATHY STEWART

General Manager

MICHAEL STAUDENMAYER

December 18, 2014

Re: PR Design and Engineering, Inc.

To Whom It May Concern:

The Northstar Community Services District has contracted very successfully on a variety of projects with PR Design and Engineering, Inc. The firm has demonstrated its ability to perform, in a fast paced and dynamic setting on a broad range of projects for the District including two needs assessments, civil site work and architectural design on a planned 9,000 sq. ft. administration building, corporation yard civil site work design and recycled building relocation and remodel.

The principals of the company strive to stretch limited agency tax dollars for projects by using a creative and smart approach to project development. Design concepts are always the product of the local site conditions and the true needs of the client insuring an efficient end product. The team at PR Design and Engineering has consistently brought the right mix of ownership and professionalism to our projects and I would recommend the firm to other agencies as I consider them to be a high value consultant.

Feel free to contact me directly if you should have any questions or need more detail.

Sincerely,

A handwritten signature in blue ink, appearing to read "Mike Staudenmayer", with a stylized flourish at the end.

Mike Staudenmayer



Information and General Services Department

Facilities Management

10014 N. Bloomfield Road
Nevada City, CA 95959
Phone: 530-470-2635
Fax: 530-265-7087

Information Systems

*Geographic Information Systems
Facilities Management*

Emergency Services

*Central Services
Cable Television*

Purchasing

*Airport
Library*

December 12, 2014

To Whom It May Concern:

Nevada County has worked with PR Design & Engineering, Inc. (PRDEI) on several upgrades to existing public facilities for the County. The principals and staff at PRDEI have been easy to work with throughout design and construction and have delivered high quality projects that meet the needs of the County and funding agency.

In 2011, working with American Rivers, a non-profit organization dedicated to protecting and restoring rivers throughout the Country, PRDEI prepared civil improvement plans including two rain gardens and a bioswale designed to capture and infiltrate stormwater runoff from impervious parking areas at the Nevada County Rood Center and Madelyn Helling Library. Construction was completed on time and within budget and has been performing well.

In 2012, a second phase of the project was designed by PRDEI that created additional parking at the Madelyn Helling Public Library and improved stormwater treatment for the existing and new parking areas. PRDEI worked with a challenging site to develop an infiltration facility that fit well with the project site and provided greatly improved pedestrian access to the Library while delivering a project that fit strict budgetary constraints.

It has been a pleasure to work with PRDEI on these projects and I would recommend them to any agency looking for a professional civil engineering firm. We are hoping to use them on other projects as funding becomes available.

Feel free to contact me if you have any questions.

Sincerely,

Tom Coburn
Facilities Program Manager, Nevada County
530-470-2637



December 12, 2014

RE: Letter of Recommendation – PR Design & Engineering

To Whom It May Concern:

The North Tahoe Public Utility District (NTPUD) has worked successfully with PR Design and Engineering, Inc. (PRDEI) on numerous projects in North Lake Tahoe. The firm has demonstrated its ability to perform in a fast paced, dynamic setting on a range of projects.

In 2011-2012, the NTPUD worked with PRDEI to update the NTPUD's Urban Water Management Plan as required by the Department of Water Resources (DWR). Included therein are: population projections, demand & community plan build-out analysis, supply discussions, and documentation of water conservation efforts. This document involved detailed: review, coordination, and approvals with NTPUD Engineering and DWR staff in addition to NTPUD board presentations. PRDEI performed and delivered all in a professional manner.

In 2013-2014, the NTPUD reviewed and approved plans prepared by PRDEI for a sanitary sewer main relocation project in Cedar Flat, CA and contracted directly with PRDEI to provide construction management of the project during construction. PRDEI worked closely with the District to deliver a quality product meeting both the needs of the property owners and the requirements of the District. The project was a success.

Most recently, the NTPUD has worked with PRDEI on the replacement of the NTPUD's Base Facilities Project for which PRDEI prepared the project's Storm Water Pollution Prevention Plan (SWPPP) required by the State Water Board. The Project was faced with a highly compressed 2014 construction season schedule in which PRDEI rose to the challenge. PRDEI delivered a SWPPP that was easily approved by the Water Board and facilitated necessary earthwork late in the construction season thereby allowing building construction to continue through the winter. PRDEI is currently providing SWPPP inspection and oversight as required by the Lahontan Water Board.

PR Design & Engineering, Inc. has clearly demonstrated their ability as a firm who can, in a professional caliber: prepare civil improvement plans, create feasibility reports, provide construction management, and work well with State and local agencies, including the Department of Water Resources and Lahontan Water Board. I would recommend PRDEI to any agency looking for a professional planning and engineering team.

Feel free to contact me if you have any questions.

Sincerely,

A handwritten signature in blue ink, appearing to read "Will Stelter", is positioned above the printed name and title.

Will Stelter, PE
Engineering & Operations Manager, NTPUD



BRUCE OLSON CONSTRUCTION

POST OFFICE BOX 475, VERDI, NEVADA 89439

TEL (775) 870-1900

FAX (775) 870-1910

CALIFORNIA LICENSE 470758

NEVADA LICENSE 23861A & 73267

HAWAII LICENSE BO-23035

December 15, 2014

To Whom It May Concern:

Bruce Olson Construction (BOC) and Olson-Olson Architects (OOA) have enjoyed working with PR Design & Engineering on a wide range of projects in the Lake Tahoe area for several years. Specializing in high-end residential and commercial development, BOC & OOA have turned to PRDEI for a variety of civil engineering projects including residential BMP plans, commercial grading plans, and complex utility design for sewer, water and fire suppression systems.

Recently, PR Design & Engineering prepared the civil improvements plans for the nearly complete Cedar Crest Resort in Homewood, CA. PR Design was responsible for preparation of the site grading, drainage and utility plans permitted through the TCPUD, Placer County and TRPA. The project included ADA parking and accessible access; site utility design including sewer, water, power and data; and TRPA BMP plans and calculations. PRDEI worked closely with the architects and designers at OOA and later with the construction team at BOC to deliver a project that meets the aesthetic goals of the owner while complying with local agency requirements.

BOC and OOA are currently working with PR Design on plans and construction documents for the Big Chief Lodge Restoration Project that will include 32 room Lodge, restaurant, and a 4,500 square foot retail and commercial building, near Olympic Valley, CA. PR Design & Engineering has completed engineering drawings for the sewer system and fire suppression systems, for which construction is nearly complete. PR Design & Engineering is currently working with Placer County on an update to the Civil Improvement Plans including parking layout, ADA parking and access, and utility design. Lastly, PR Design & Engineering is designing the Community Water System as required by Placer County Environmental Health to serve the year round commercial and residential development.

PRDEI has always been willing to explore alternate methods and to think outside the box for the benefit of the project design. They holistically evaluate costs and benefits to provide a concrete basis for decision-making, monitor the construction process, and follow up to ensure effective operation.

The team at PR Design & Engineering is a pleasure to work with and we look forward to continued work with their firm.

Feel free to contact me if you have any questions.

Best Regards,

A handwritten signature in cursive script, appearing to read "Lori Shannon".

Lori Shannon
Project Planner, BOC/OOA

PRDEI - Recognition and Awards

2016 TRPA Best in the Basin Award – Tahoe Beachfront Residences

2013 TRPA Best in the Basin Award – The Tahoe House Bakery

2010 Nomination for State Water Resources Control Board - American Rivers Low Impact Development Demonstration Project

2008 Nomination for California Transportation Foundation – TRANNY Award – Minnow St. Pervious Concrete Parking Lot

2006 TRPA Best in the Basin Award – Skyland Lakefront Landscape & Parking

2006 TRPA Best in the Basin Award – Gordon Pier & Landscape

2005 Keep Truckee Green Award – Community Services for the Environment

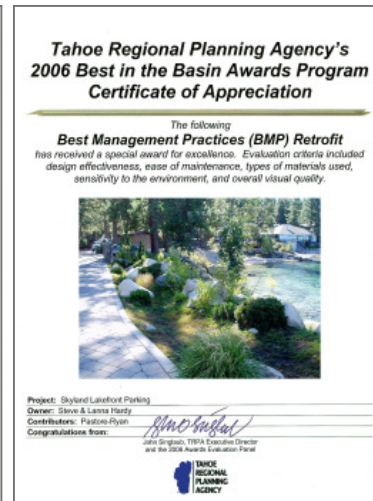
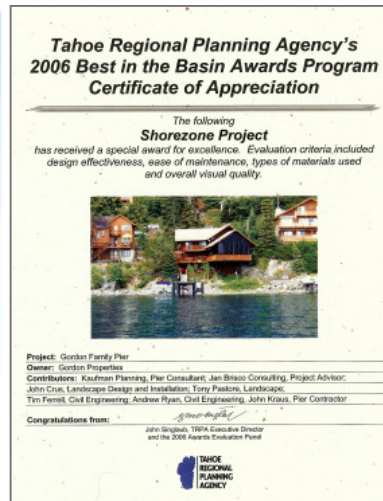
2005 - 2006 Juror for Tahoe Quarterly annual “Home Awards”

2003 - 2008 President, Vice President and Events Chair – Sierra Green Building Association

2003 - 2008 TRPA special guest lecturers for Contractor’s BMP Training Workshops

2002 Co-founders Sierra Green Building Association (www.sigba.org)

1994 Smithsonian Air and Space Museum – Design and build full scale exhibit of Hubble Space Telescope



PRDEI - References

Placer County Department of Public Works

Peter Kraatz – Deputy Director

P.O. Box 336, King Beach, CA 96143

530.581.6238 pkraatz@placer.ca.gov

Incline Village Improvement District

Charles Miller – Principal Engineer

1220 Sweetwater Road, Incline Village, NV 89451

775.832.1372 charley_miller@ivgid.org

Tahoe Beachfront Residences

Todd Davidson – Owner

707 Cristina Drive, Incline Village, NV 89451

775.336.9445 tcdtahoe@gmail.com

JMA Ventures, LLC

David Tirman – Executive Vice President

PO Box 3938, Truckee, CA 96160

530.581.5472 dtirman@jmaventuresllc.com

Northstar Community Services District

Mike Staudenmayer – General Manager

908 Northstar Drive, Northstar, CA 96161

530.562.0747 mikes@northstarcasd.com

American Rivers

Luke Hunt Ph.D. – Director of Headwaters Conservation

432 Broad Street, Nevada City, CA 95959

530.575.8212 lhunt@americanrivers.org

Budget & Schedule Experience

Description of Experience Meeting Budgets and Aggressive Project Schedules

One of the less glamorous but critical elements to a successful project is the contract work. The contract establishes the scope of work, fees, timeline and terms/conditions. These contract documents should be carefully developed with client and consultant present to ensure all parties clearly understand, and agree to, the content. The time devoted to this exercise on the front end of the project limits conflict during project delivery.

The scope of work should be arrived at by way of a dialogue with the client to ensure the scope is inclusive of all the work foreseen as necessary to deliver the project. Specific clauses in the contract allow for additions to the scope for unforeseen items.

The fees and schedule are figured by the consultant and are based directly on the well-defined scope of work. When a work task is difficult to define or is subject to the findings of a “discovery period”, every effort will be made to estimate an allowance based on a worst-case scenario.

We develop schedules based on the work to be performed and a careful assessment of available resources to complete the work. We understand the importance of the schedule relative to project funding as most of our projects require multi-agency funding that is often on fixed timelines. If we do not deliver on schedule, project funding may be jeopardized. Fortunately we have always met our funding deadlines.

Our team prides itself on keeping to our schedules and budgets. Our dedicated staff is always willing to make the effort required to deliver on time and on budget. Clear expectations, well-defined deliverables, and thorough schedules create the structure required to keep a project on track. We respect the time required to develop a clear scope of work with defined deliverables and timelines.

PR Design & Engineering Inc. - Rates

The following rates are effective January 1, 2018

Principal Engineer	\$150.00/hr
Staff Engineer	\$120.00/hr
Landscape Architect	\$115.00/hr
Water Quality Technician	\$105.00/hr
Engineering Technician	\$105.00/hr
Design Associate	\$95.00/hr
Clerical	\$55.00/hr
Materials	at cost + 15%
Travel	Federal mileage rate + hourly/rate (negotiable)
Overtime (+8 hrs)	Rate x 1.5
Saturday	Rate x 1.5
Saturday Overtime (+8 hrs)	Rate x 2
Sunday, Holiday	Rate x 2

Reimbursable Expenses

In addition, PR Design & Engineering Inc. will be reimbursed all out-of-pocket expenses, such as postage, blueprint and photocopy reproduction of drawings, photography, models, travel, long distance telephone, notary, courier and express delivery services, etc. at 1.15 times the cost for administrative purposes. Local travel will be billed in accordance with published IRS reimbursement rate. Out of town travel and related expenses shall be approved by client and shall be billed at cost. Reimbursable costs are exclusive of the fee quoted above. Support documentation for reimbursable expenses is available upon specific request of client.

Meeting Rates and Fees

All meetings to discuss aspects of this project including telephone conferencing, meetings on a project site, in agency or in professional offices, in residences of project participants, and similar meetings purposed to discuss and/or convey information regarding this project, unless otherwise included in the scope of work, are to be billed on a time and materials basis. Associated preparations, materials and travel to and from these meetings (unless required under an approved Task) is to be billed as a reimbursable expense per the Reimbursable Expenses clause above.

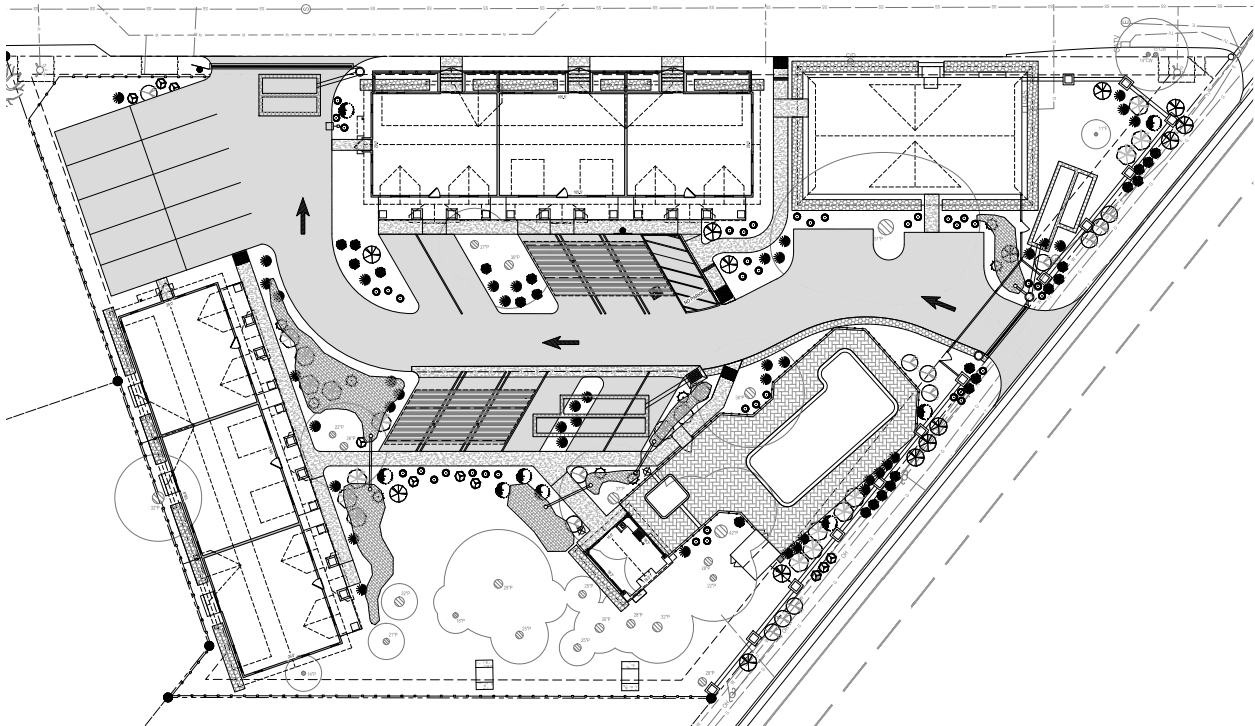
Portfolio of
Work

Woodvista Redevelopment Project

Tahoe Vista, CA 2016-Current

PRDEI was hired by Woodvista LLC., the owner, to redevelop the old Woodvista Lodge, a delapidated motel with aging infrastructure and site amenities and construct new townhomes. We will draw from our past experiences as the project is very similar to the redevelopment of Tahoe Beachfront Residences; one of the many reasons Woodvista LLC. sought out our firm. The civil improvements will include new infrastructure, permanent water quality BMPs, ADA accessibility for parking and building access, landscape design and additional site amenities including: common area gazebo with kitchen, pool and spa.

PRDEI is currently managing all civil engineering tasks and all agency permitting, including Placer County, TRPA, Caltrans, North Tahoe Fire Protection District, North Tahoe PUD and other utility companies. The redevelopment project requires a Conditional Use Permit for the Planned Unit Development and Subdivision for Placer County. A Lot Line Adjustment and Highway Scenic Analysis for TRPA and an Encroachment Permit for Caltrans are among other entitlements.



King Beach Commercial Core Improvement Project

Kings Beach, CA 2013-2017

PRDEI has been working on the Kings Beach Commercial Core Improvement Project (KBCCIP) beginning with plan review for buildability and continuing with construction management/ oversight and SWPPP inspections for Phase I, Phase 2 and Phase 3 of the project. This \$30.2 Million Environmental Improvement Project includes water quality and roadway improvements to State Route 28 and the residential “Grid” neighborhood of Kings Beach to provide treatment and conveyance of stormwater and to accommodate transit and pedestrian needs of the community.

Surface improvements include updating traffic patterns with round-a-bouts, parking areas, public transit stops, and traffic calming measures; and sidewalks to improve pedestrian access to the commercial downtown area and to the Kings Beach State Recreational Area. Storm water improvements include curb and gutter, storm drain pipe, drainage channels, stabilized and vegetated stormwater outfalls and revegetation of disturbed areas throughout the project area.

The size and nature of the project mandates coverage under the Construction General Permit issued by the Lahontan Water Board. PRDEI was responsible for preparation and implementation of the Storm Water Pollution Prevention Plan (SWPPP) as required by the Permit. PRDEI is responsible for agency coordination and permit compliance throughout construction and performs routine visual inspections and stormwater sampling to ensure compliance with the Construction General Permit.

To facilitate an aggressive construction schedule, PRDEI worked closely with Lahontan and TRPA personnel to allow an early construction start date of April 1, 2014. The Project was granted a Variance for Soil Disturbance Prohibition by the Lahontan Water Board and a Grading Exemption approved by TRPA. In addition, PRDEI worked with Lahontan personnel to amend the Project’s Clean Water Act Section 401 Water Quality Certification to allow discharge of construction dewatering waste to the County MS4 storm water infrastructure by implementing an advanced filtration system. This project was awarded the Lahontan and Caltrans Construction Stormwater Partnership Award in 2015.

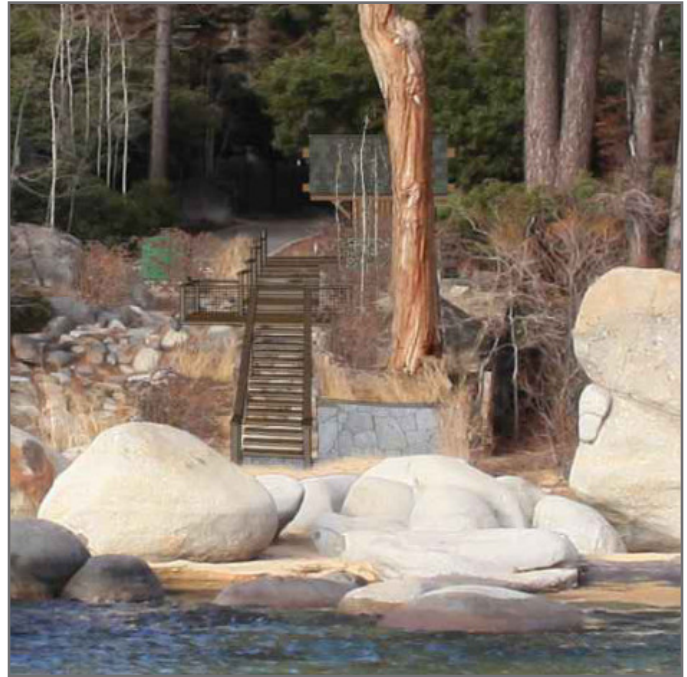


Speedboat Beach Access & Restroom Project

Brockway, CA 2016-Current

PRDEI was hired by Placer County to design a safe route for pedestrians to access Speedboat Beach. The challenging constraints of the site and exiting access to the beach, lead to creative solutions for the pedestrian path. An elevated steel framed walkway was designed for the pedestrians path, allowing stormwater to pass underneath in a rock lined channel, improving water quality to Lake Tahoe. Additionally, PRDEI designed a new restroom building to replace the existing potable restrooms provided during the high-use summer months.

PRDEI developed civil, structural and landscape plans and specifications for the project. The Tahoe Regional Planning Agency permit included baseline and proposed scenic analysis as view from Lake Tahoe and visual simulations of the proposed design.



Tahoe Beachfront Residences - Redevelopment Project

Kings Beach, CA 2015-2016

PRDEI worked closely with the Developer, Peak10 LP and Dale Cox Architects on the Tahoe Beachfront Residences, an urban infill project located in the heart of downtown Kings Beach, California. As the project lead, PRDEI managed all civil engineering tasks and all agency permitting, including Placer County, TRPA, Caltrans, North Tahoe Fire Protection District, North Tahoe PUD and other utility companies. The redevelopment project required a Conditional Use Permit for the Planned Unit Development and Subdivision for Placer County. A Lot Line Adjustment and Scenic Analysis for TRPA and an Encroachment Permit for Caltrans among other entitlements. The challenging constraints of the property lead to unique and creative design solutions to achieve the goals of the project.

The civil improvements included new infrastructure, permanent water quality BMPs, undergrounding of overhead utilities along Brockway Vista Avenue right-of-way, ADA accessibility for parking and building access and landscape design. Our team received TRPA's 2016 Best in the Basin Award.

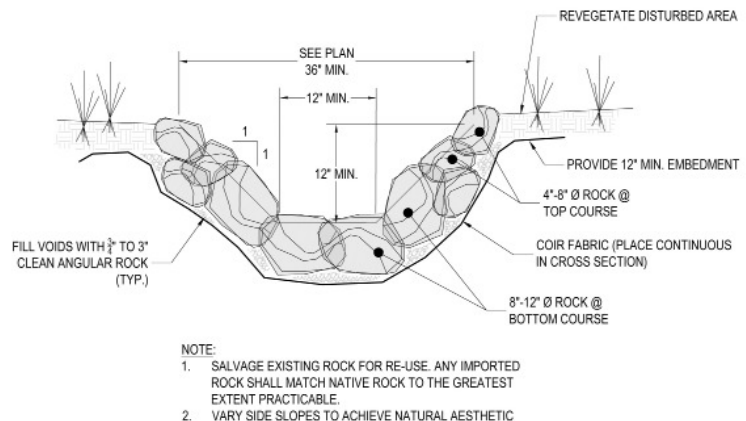
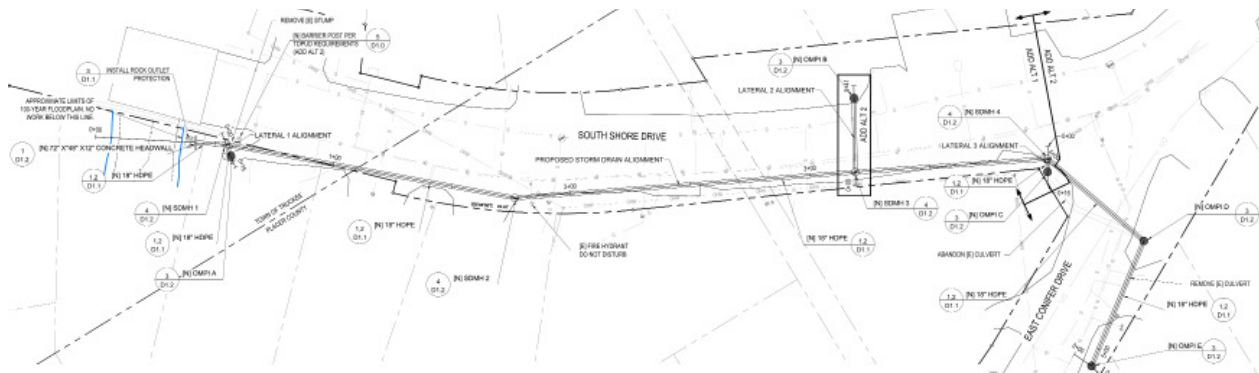


South Shore Drive Storm Drainage Project

Truckee, CA 2017-Current

PRDEI worked closely with the Placer County Public Works and Facilities to develop alternative designs to reconstruct a portion of South Shore Drive that was damaged during the winter of 2017 from a rain on snow event. The project is split between two jurisdictions, where extensive flooding severely damaged existing roadway and infrastructure within the Placer County and the Town of Truckee Rights of Way. The civil improvements included new storm drainage infrastructure to enhance roadway drainage conditions, roadway improvements and grading, and permanent water quality BMPs.

PRDEI provided coordination with Placer County, Town of Truckee, FEMA/ Cal OES, California Department of Fish and Wildlife and Army Corps of Engineers to create the preferred alternative with the greatest benefit and lowest estimated cost while meeting current codes and standards.



North School Street Rehabilitation Project

Grass Valley, CA 2016-2017

In 2016 PR Design & Engineering prepared civil improvement plans for the rehabilitation of a portion of North School Street in the City of Grass Valley, CA. The project was made possible through the coordinated efforts of American Rivers, the CABY/IRWM plan with funding provided in part by California Proposition 84 grant program. The project provided cost effective source control, reduced urban runoff and improved water quality by replacing 4,500 square feet of failing asphalt pavement with new pervious concrete.

PR Design & Engineering worked closely with the City of Grass Valley and American Rivers to provide education outreach to local contractors. The project was constructed in 2017 and serves as a model project for developers and agencies looking to reduce urban stormwater runoff and improve water quality in the greater Grass Valley area.



Big Chief Lodge Restoration Project

Olympic Valley, CA 2005-2016



Since 2011, PRDEI has worked with Bruce Olson Construction and Olson-Olson Architects on the civil design for the Big Chief Lodge Restoration Project. The project includes restoration of the 32 room Big Chief Lodge, 30,000 square feet, and construction of a 4,500 square foot Nordic Center, a multi-tenant commercial and retail building along the Truckee River. The Big Chief Lodge and Nordic Center are pursuing LEED certification for efficient building and site design and construction.

As the project lead PRDEI, manage all civil engineering tasks completed to date. Improvements include a Caltrans permitted left-turn lane Highway 89; design of a sewer lift station conveying wastewater across the Truckee River to the TTSA interceptor; design of a fire distribution system including a sub-surface water storage reservoir and a pump house capable of delivering fire flow to the property.

PRDEI is currently preparing Civil Improvement Plans for the project that include an updated flood analysis of the property, parking lot design, ADA accessibility for commercial buildings, parking and building access, and emergency vehicle access. In addition, PRDEI is currently finalizing the design for a state of the art water treatment facility permitted through Placer County Environmental Health as a Community Water System to deliver potable drinking water to the commercial property as well as several residences east of the Truckee River.

PRDEI is involved with all facets of the permit process and has and continues to work with numerous departments at Placer County, the Squaw Valley Fire Department, Tahoe City Public Utility District, and the Lahontan Water Board. Construction of the Big Chief Lodge is scheduled to begin in 2015.

Northstar CSD Administration & Engineering Building

Northstar, CA 2008-2016



In 2007-2009, PRDEI worked with the NCSD to prepare a District Master Plan and Spatial Needs Assessment to identify the current needs and future growth of the NCSD. In 2010, using knowledge from the in-depth assessment, PRDEI prepared civil improvement plans, specifications, and provided permit support for the project. Civil design components include parking area design, ADA parking and access to the building, grading and drainage plans, site utility plans and temporary and permanent BMP structures. Additionally, a geothermal ground loop system was installed as part of Phase.



PRDEI began Phase 2 in 2013 to finalize a few design components for the construction of the new Administration and Engineering Building. Civil improvements were completed in 2016.



Robert Sinskey Vineyards

Napa, CA 2008-2016



The Robert Sinskey Vineyards (RSV) engaged our firm to provide a range of civil engineering services. RSV is a certified organic and certified biodynamic vineyard and winemaker with an extensive tasting room and food/wine pairing kitchen. The vineyard and winemaking facility currently gets 75% of its electrical power from a 72 KW solar photovoltaic power generator.

We approached our work with the core values of biodiversity, conservation, and sustainability. Our close relationship with Arkin Tilt Architects ensured a well-coordinated, integrated approach to this holistic design.

We conducted a complete site analysis including: topography, existing infrastructure, plant species visitor use, parking patterns, process wastewater, stormwater, ADA accessibility, solar access, rainfall and temperature regime.

Our scope further included civil schematic, design development, construction documentation and construction administration for utility upgrades, constructed wetlands for treatment of process wastewater, stormwater management, parking design, pedestrian and ADA circulation, landscape consulting and orchard design. We provided permitting documents

for Napa County and developed a Report of Water Discharge for the State Water Resources Control Board for the sub-surface flow constructed wetlands.

The process wastewater is now treated through the built constructed wetlands and provides the required fire-flow for the expansion of the winery. RSV is dedicated to providing on-site sustainable treatment of its wastewater in its efforts to expand production.

Construction was completed in 2016.



Martis Valley Trail - Segment 1A & 1B

Northstar, CA 2014-2016

PRDEI is currently providing construction management, inspection services and SWPPP compliance inspections on behalf of the Northstar Community Services District (NCSD) for the construction of the Martis Valley Trail Segment 1A and 1B. The project includes construction of approximately 2,900 feet of paved, multi-use recreational trail through Martis Valley near the Nevada/Placer County line. Segment 1A is part of a larger 10-foot-wide paved bike path that will stretch 10.4 miles and will serve as a connection from Truckee to the North Shore, linking the communities of Truckee, Martis Valley, Northstar and Kings Beach. The intended use of the proposed trail is to accommodate multiple non-motorized uses, which include but are not limited to cyclists, pedestrians, and joggers/runners.



Pervious Hardscape Projects

The Sierra Nevada 2005-Current



Types of Pervious Concrete



Standard Grain:
Driveways



Fine Grain:
Walkways/Patios



Fine Grain:
Integral Color

Pervious concrete is very similar to traditional concrete but it is porous and does not produce runoff. Permeable pavement systems allow stormwater to infiltrate which helps a project mimic the predevelopment hydrologic function. This is important for groundwater recharge, health of vegetation, pollution control, flood management, etc. Because of its light color, pervious concrete also reduces the “heat island” effect and reduces night time lighting needs. These are just a few of the many benefits of permeable paving systems.

PRDEI has been privileged to take part in over a dozen successful installations of pervious concrete for Tahoe Regional Planning Agency, Placer County, the Town of Truckee and several private clients. We also provide design for a variety of permeable paving systems using vegetated pavers such as TurfStone™ and others.



Brockway Erosion Control Project

Brockway, CA 2008-2012

PRDEI coordinated with numerous involved stakeholders and facilitated agency and public meetings for the 127 acre urban stormwater management project. The project required several design iterations after the selection of a preferred alternative and Storm Water Quality Investigative Committee Process. (SWQIC Process).

Stakeholders include:

- Tahoe Regional Planning Agency
- California Tahoe Conservancy
- Private Developers
- Placer County
- USFS
- Engineering, Compliance, &
- Neighbors in Project Area
- Nevada DOT
- other Consultants
- Cal Trans
- Washoe County

Because the project was located in a residential neighborhood in the Lake Tahoe Basin and adjoins two state and two county lines, it was subject to several layers of jurisdictional oversight and considered by many veteran professionals of the area to be the most complex Environmental Improvement Projects in the Tahoe Basin. PRDEI coordinated and worked with one of the many stakeholders above from permitting to design to construction.

The design employs low tech insitu treatment of urban stormwater in a steep watershed area with direct outfalls to Lake Tahoe. The primary method of treatment was infiltration. Bio-swale/ basin areas were introduced to treat what cannot be infiltrated prior to outfall to the Lake. Additions of curb and gutter were minimized but required to manage otherwise rogue flows along roadways. Revegetation and soil stabilization support source control strategies. The project was completed in 2012.



4x6" ROUND RIVER COBBLE

8" CONCRETE BARRIER CURB, SEE DETAIL 9, THIS SHEET

EXISTING GRADE 8.0% SLOPE @ PARKING LOT

6" TYP.

TRIPLE WASHED PEA GRAVEL

6" TOPSOIL W/ MULCH TOP LAYER

CONCRETE BAFFLE TOP ELEV 96.00

LANDSCAPE SPECIES WILL BE SELECTED FROM TRPA'S RECOMMENDED NATIVE & ADAPTED PLANT LIST

WOOD CHIP GABION SET 6" BELOW FINISH GRADE (TYP.), SEE DETAIL 8, THIS SHEET

8" CONCRETE RETAINING WALL TOP ELEV. 97.00

EG BOW 94.61

FG BOW 94.44

BOT. ZONE A 93.75

BOT. FOOTING 92.60

4" ADS PERFORATED PIPE WITH 1-1/2" WASHED DRAIN ROCK

IE OUT 95.00

ZONE A AREA - SCARIFY AND TILL NATIVE SOIL TO 8" DEPTH ADD 3" WOOD CHIPS

6" TYP.

ZONE A

SLOPE BOTTOM @ 2%

ZONE A

TAHOE HOUSE
bakery & gourmet
since 1972

Bread & Pastries

Coffee House

Sandwiches & More

Gourmet on the Go

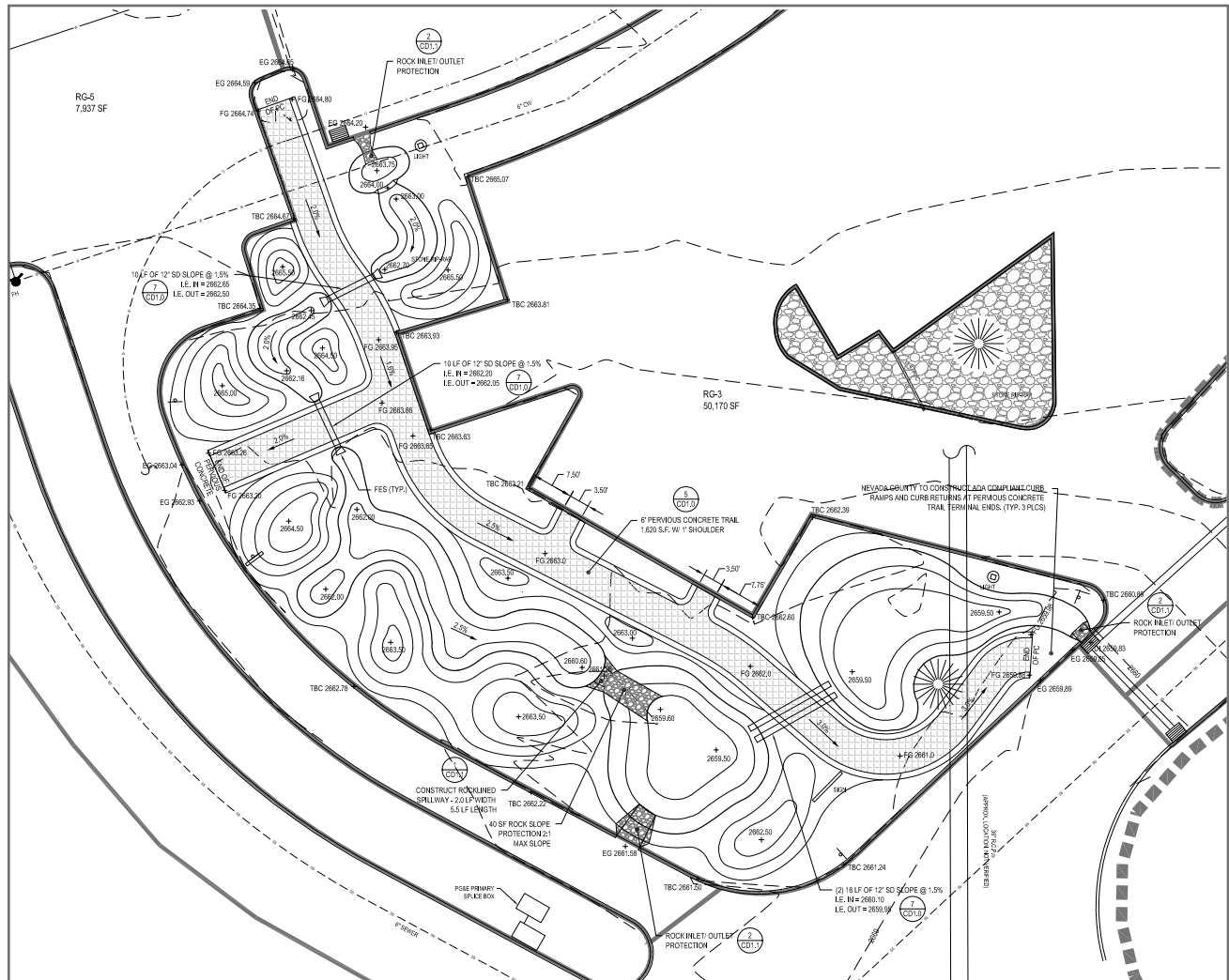
PRIVATE PARKING
Tahoe House
10000 Highway 101
Incline Village, NV 89450
Phone: 775-794-1111
Fax: 775-794-1112



LAKE TAHOE
imagine, play, achieve

American Rivers

Nevada City, CA 2009-2010



This project is the LID retrofit of the existing Nevada County Offices Road Center. Tightly constrained budget and timelines have inspired Mr. Ryan and the design team to deliver creative cost-saving solutions including use of on-site soils being augmented instead of removed and replaced with “engineered soils”. This saves cost (and GHGs) for excavation, off-haul and on-haul. Further design strategies include use of existing DIs for sediment traps, salvage of landscape plantings, salvage of irrigation system, use of senescent site trees for landscape features & furnishings, etc. PRDEI provided provide design, engineering, consulting, and construction management.

NCSD Corporate Yard - Office Building

Truckee, CA 2009-2010



What could be more green than re-using a building instead of building a new one? PRDEI provided pre-project cost estimating and feasibility analysis to allow the NCSD to determine a course of action. Wise use of public funds added to the conditions warranting the re-location of the 4,000 square foot office building from the Northstar Village to the NCSD's corporate yard. We selected a site that allows managers important visual access to the site from office windows, provides southern exposure to public access points and driveway areas (important in snow country design) and also allowed the addition of a 1,400 square foot storage garage that was much needed by the District. PRDEI provided interior remodel design of the building to NCSD requirements. PRDEI saved the NCSD over half a million dollars (about 30%) of projected cost to build a new facility.



NCSD Corporate Yard - Civil Site Work

Truckee, CA 2009



PRDEI created master planning documents based on an extensive Needs Assessment (also by PRDEI) for the Northstar Community Services District - Corp Yard facility. The Utilities Division provides water, sewer, roadway infrastructure and maintenance, and trash and recycling services to the Northstar Community. The entire site is being renovated and upgraded to modern standards for corp yard facilities including modernized: fueling facility, vehicle wash bay, sweeper dump area, stormwater management, safety and security and materials handling.

NCSD Geothermal Ground Loop

Truckee, CA 2008



The 8,500 SF new “green” administration building for the Northstar Community Services District will be fitted with a geothermal ground loop (ground source heating/cooling system). This system was chosen for many reasons including a relatively short “payback” meaning that in about 15 years, the system installation will have paid for itself through energy savings.

Some of this rapid return is derived from the creative use of a large hole in the ground that was left over from the demolition of an abandoned water treatment plant where a future parking lot will be built.

The NCSD saved excavation costs and installed a system that pays for itself over time. Ground source renewable energy systems add significant efficiency to heating and cooling a building and are very reliable.

PRDEI provided provide construction management services on behalf of NCSD.



Workshop Facilitation - Volunteer Efforts

Livable ~ Walkable Communities & Re-Inventing Main Street

Presented By:
NTBA - Mainstreet Design Committee

3-Part Workshop Series

Livable ~ Walkable Communities

North Lake Tahoe



Free Public Event

Flyer Design: Meghan Bohner, Postbox • Ryan

This 3-part series of educational workshops will inspire, educate, and highlight the elements of livable and walkable communities. Please join the North Lake Tahoe and Truckee communities for this educational series.

- **September 18th ~ 5:30-8:00**
Making Your Neighborhood Work & the Citizen Planner
North Tahoe Community Conference Center
8318 North Lakes Boulevard, Kings Beach
- **October 27th ~ 5:00-8:30**
The Building, the Block, the Street
Live music & BBQ to follow
North Tahoe Community Conference Center
8318 North Lake Boulevard, Kings Beach
- **October 3rd ~ 5:30-8:00**
Center & Edge
The Boys & Girls Club
8125 Steelhead Avenue, Kings Beach

For more information contact:
North Tahoe Business Association
530-546-9000 pam@ntbamainstreet.org

Mainstreet Design Committee:
Dave Polley, Pam Johnson, Leah Kaufman, Andrew Ryan, Abbey Edwards, Jeff Rose, Mike Lefrançois, Steve Rogers, Chris Oberte



NTBA - Livable ~ Walkable 3-Part Workshop Series

In 2005, with the impending Kings Beach Commercial Core Improvement Project on the horizon, PRDEI took the position that this community needed more information about what each alternative really offered. As a volunteer on the North Tahoe Business Association Mainstreet Design Committee, Andrew T. Ryan, PE coordinated and hosted a 3-part workshop series, including one in Spanish, to inform the North Tahoe Region of the benefits of "complete street" planning. This work developed a professional relationship between PRDEI and the Local Government Commission, an NGO located in Sacramento.

Re-Inventing Main Street

Livable Walkable Communities in the Sierra

A Planning and Design Workshop for Citizens, Planners, Designers, Engineers, Realtors & Transportation Professionals

Leading design and transportation professionals from around the USA and Tahoe will present and answer questions on key topics including:



Courtesy of Mike Savad

- Community Health Benefits
- Multi-Modal Transit
- Roundabouts
- Road Diets
- Traffic Calming
- Pedestrians and Bicyclists
- Main Street Economics
- Revitalization

SAT. MAY 2, 9:00-4:00
NORTH TAHOE EVENT CENTER
\$15.00 public
\$50.00 professional
* lunch included

FRI. MAY 1, 5:30-7:30
TRUCKEE COMMUNITY CENTER
10046 Church St
• free reception, mixer, film
Information 530.546.9000
www.ntbamainstreet.org

Jim Daisa, PE has authored several books on transportation planning including "Green Streets", "Context Sensitive Solutions in Designing Major Urban Thoroughfares for Walkable Communities" and "The New Transit Town - Best Practices in Transit-Oriented Development".

Michael Runkin author of ODOT's "Main Street Handbook" proposes that it is the responsibility of transportation agencies to provide for the most basic (walking) and efficient (bicycling) forms of transportation; he envisions transportation systems where people's needs are considered first.

Michael Wallwork, PE says "My objective is to help communities develop safer, more efficient and more attractive roads that better suit their current needs."

Karen Fink is a Regional Transportation Planner for the TRPA specializing in pedestrian and bicycle planning, outreach events like Bike to Work Week, and policy. Of Tahoe, Karen notes "It's a beautiful place to enjoy by bicycle!"

Sandra Carter MPH, PhD acted as the Chairperson for the Tahoe City Sidewalk Project, conducted the local "Walkability Index" studies and consults to municipalities on the public health implications of planning and development.

Tony Lashbrook, Truckee Town Manager Tony has spent 28 years working for local government in the Sierra. He has presented papers on specific plans, public involvement, tourism planning and Brownfield development.

Dan Wilkins PE, Public Works Director & Engineer with the Town of Truckee is a 20 year transportation planner with 11 years experience in Truckee including design and construction of 6 roundabouts.

Darin Dinsmore Master Planner of the Truckee Railroad Project, a plan to extend main street, improve walkability & create a new downtown district. He's documented Western historic town patterns and best practices in the Sierra.

Made possible with grant support from:



Re-Inventing Main Street Planning Workshop, 2010

This important one day workshop was geared toward professionals but was crafted to build understanding progressively for the general public. The workshop brought several local presenters; national and international experts to a dynamic session. Real world case studies of livable/walkable community strategies such as bike and pedestrian trails, traffic calming, road diets, roundabouts, etc. were highlighted with regard to key "quality of life" indicators. The importance of the infrastructure design in "making the place" was made clear and the level of the local dialogue broadened to a more informed conversation.

A Design Firm with a Mission

Mission

Our mission is to provide innovative high-performance site design, building design, consulting, and analysis exceeding client expectations while improving project efficiencies and minimizing environmental impacts. We believe in a team-based integrated-systems approach. We carefully link design elements into sensible plans that optimize energy and operational needs. We are inspired to contribute to the community development process by participating in public meetings, volunteering for service organizations, and maintaining an “open door” policy to encourage dialogue.

Vision

We envision a world where development prioritizes natural systems and human spaces are safe, healthy, and sustainable for all.

